

REDEPLOYMENT OF GUARD BUOY AND WAVE BUOY BLACKWATER ESTUARY, ESSEX NOTICE TO MARINERS

Update to NtM issued on 24th February 2020

Further to the Notice to Mariners issued on 24th February 2020, Partrac Ltd. can confirm that it has completed service visits for x2 buoys that were reported as offsite in the Blackwater Estuary as follows:

- The Guard Buoy (Figure 1) has been redeployed at location M3.
- The Wave Buoy (Figure 2) has been recovered and redeployed at location M6.

The positions of M3 and M6, and x4 further marine sensor sites in the Blackwater Estuary, are given in Table 1 and shown in Figure 3.

Table 1: Positions of the five Marine Sensor (M1-M5) and one Wave Buoy (M6) deployments in WGS84 Decimal Degrees and Degrees Decimal Minutes

Site	Lat (DDM)	Long (DDM)	Lat (DD)	Long (DD)
M1	51° 43.542'N	000° 49.662'E	51.725700°	0.827700°
M2	51° 44.796'N	000° 53.514'E	51.746600°	0.891900°
M3	51° 45.108'N	000° 58.080'E	51.751800°	0.968000°
M4	51° 43.932'N	001° 07.218'E	51.732200°	1.120300°
M5	51° 42.558'N	001° 03.222'E	51.709300°	1.053700°
M6	51° 43.914'N	001° 07.128'E	51.731900°	1.118800°

For further information please contact:

Kevin Ransom – Partrac Ltd. M: 07810 055685 E: kransom@partrac.com



Figure 1: Guard Buoy at sites M1-M5



Figure 2: Wave Buoy at site M6

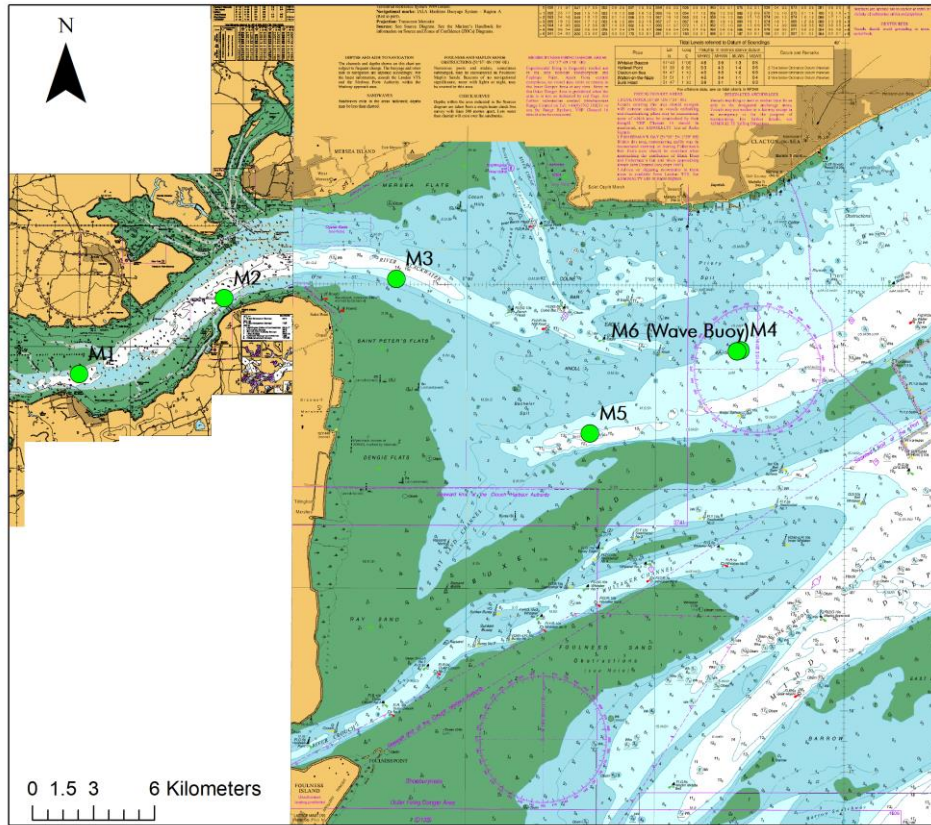


Figure 3: Marine Sensor (M1-M5) and Wave Buoy (M6) deployment locations in the Blackwater Estuary